



Welbilt Deutschland GmbH

Talstraße 35
82436 Eglfing
Deutschland

www.convotherm.com

Technical Data

Model	Rated voltage	Frequency	consumption	Rated current
Cmn 6.10 pro	380V - 415V	50/60Hz	6,4kW - 7,6kW	9,7A - 10,5A

articlenumber circuit diagram 5336500-10015_00
articlenumber device

Created on 15.04.2025 CONVOTHERM®
Edit date 28.05.2025 by (short name) ALTENDORF.A

Table of contents

Con_Inhaltsverzeichnis

structur	&	Page	Page description	Creator	Edited by	Date manually	Date Automatic
higher-order Administrative Documents	&BAA	1	Title page / cover sheet	ALTENDORF.A	ALTENDORF.A		28.05.2025
higher-order Lists (Documents concerning)	&BAB	2	Table of contents : &BAA/1 - ==CS1=LGT+CC1&EFS/1	ALTENDORF.A	ALTENDORF.A		28.05.2025
higher-order Lists (Documents concerning)	&BAB	2.a	Table of contents : ==CS1=CT1+CC1&EFS/1 - ==CS1=CS1+WC1&EFS/2	ALTENDORF.A	ALTENDORF.A		28.05.2025
higher-order Explanatory Documents	&BDB	1	Overview functions	ALTENDORF.A	ALTENDORF.A		28.05.2025
higher-order Explanatory Documents	&BDB	2	Overview locations	ALTENDORF.A	ALTENDORF.A		28.05.2025
higher-order Explanatory Documents	&BDB	3	Overview document types	ALTENDORF.A	ALTENDORF.A		28.05.2025
=PLC +WC1Combi oven Control Wiring compartment							
Electrical engineering Functional overview documents	&EFA	1	Overview Main board complete	ALTENDORF.A	ALTENDORF.A		28.05.2025
Electrical engineering Functional overview documents	&EFA	2	Overview Main board Network connector	ALTENDORF.A	ALTENDORF.A		28.05.2025
Electrical engineering Functional overview documents	&EFA	3	Overview Expansion board	ALTENDORF.A	ALTENDORF.A		28.05.2025
Electrical engineering Circuit documents	&EFS	1	Wiring overview	ALTENDORF.A	ALTENDORF.A		28.05.2025
=SU1 +MT1Combi oven Power supply Mounting panel							
Electrical engineering Circuit documents	&EFS	1	Power supply	ALTENDORF.A	ALTENDORF.A		28.05.2025
Electrical engineering Circuit documents	&EFS	2	Power supply	ALTENDORF.A	ALTENDORF.A		28.05.2025
=CV1 +WC1Combi oven Convection system 1 Wiring compartment							
Electrical engineering Circuit documents	&EFS	1	Hot air Generation 1	ALTENDORF.A	ALTENDORF.A		28.05.2025
=IJ1 +WC1Combi oven Water injection Wiring compartment							
Electrical engineering Circuit documents	&EFS	1	Sprayer	ALTENDORF.A	ALTENDORF.A		28.05.2025
Electrical engineering Circuit documents	&EFS	2	Sprayer	ALTENDORF.A	ALTENDORF.A		28.05.2025
=MOT +MT1Combi oven Oven fan Mounting panel							
Electrical engineering Circuit documents	&EFS	1	Motor	ALTENDORF.A	ALTENDORF.A		28.05.2025
=COL +WC1Combi oven Condenser box Wiring compartment							
Electrical engineering Circuit documents	&EFS	1	Condenser box	ALTENDORF.A	ALTENDORF.A		28.05.2025
=CL1 +WC1Combi oven Cleaning 1 (Solid to Liquid) Wiring compartment							
Electrical engineering Circuit documents	&EFS	1	Cleaning	ALTENDORF.A	ALTENDORF.A		28.05.2025
=LGT +CC1Combi oven Oven light Oven cavity							
Electrical engineering Circuit documents	&EFS	1	Lamp	ALTENDORF.A	ALTENDORF.A		28.05.2025

Table of contents

Con_Inhaltsverzeichnis

structur	&	Page	Page description	Creator	Edited by	Date manually	Date Automatic
=CT1 +CC1	Electrical engineering Circuit documents &EFS	Combi oven Core temperature probe Oven cavity					
		1	Sensor (Option)	ALTENDORF.A	ALTENDORF.A		28.05.2025
=COO +WC1	Electrical engineering Circuit documents &EFS	Combi oven Cooling Wiring compartment					
		1	Function	ALTENDORF.A	ALTENDORF.A		28.05.2025
		2	Automatic Automatic machine. Door catch	ALTENDORF.A	ALTENDORF.A		28.05.2025
=HMI +MT1	Electrical engineering Circuit documents &EFS	Combi oven HMI Mounting panel					
		1	Control panel	ALTENDORF.A	ALTENDORF.A		28.05.2025
		2	Control panel	ALTENDORF.A	ALTENDORF.A		28.05.2025
=CS1 +WC1	Electrical engineering Circuit documents &EFS	Combi oven ConvoSense Wiring compartment					
		1	ConvoSense	ALTENDORF.A	ALTENDORF.A		28.05.2025
		2	ConvoSense	ALTENDORF.A	ALTENDORF.A		28.05.2025

Example

Description
Standards
EPLAN
Nesting

==CS1

Combi oven
Functional assignment
Functional assignment
No

=CV1

Hot air 1
Functional aspect
Function designation
No

==CS1 Combi oven

=PLC	Control
=SU1	Power supply
=CV1	Convection system 1
=IJ1	Water injection
=MOT	Oven fan
=COL	Condenser box
=CL1	Cleaning 1 (Solid to Liquid)
=LGT	Oven light
=CT1	Core temperature probe
=COO	Cooling
=HMI	HMI
=CS1	ConvoSense

			Date	28.05.2025	Observe protection notices in accordance with ISO 16016	=	Overview functions	articlenumber circuit diagram			==	
			Ed.	ALTENDORF,A				5336500-10015_00			=	
			Appr					articlenumber device		Project description		+
Modification	Date	Name	Original					17.0		-	higher-order Explanatory Documents	& BDB 1

Example

+MT1

Description
Standards
EPLAN
Nesting

Mixer 1
City
Installation site
No

- +EXT

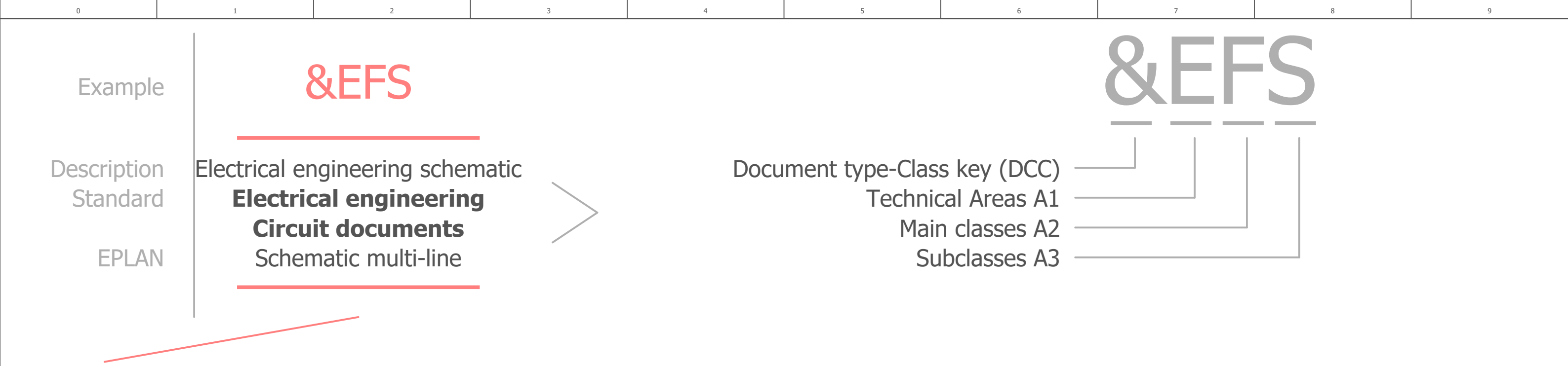
External Installation site
- +MT1

Mounting panel
- +WC1

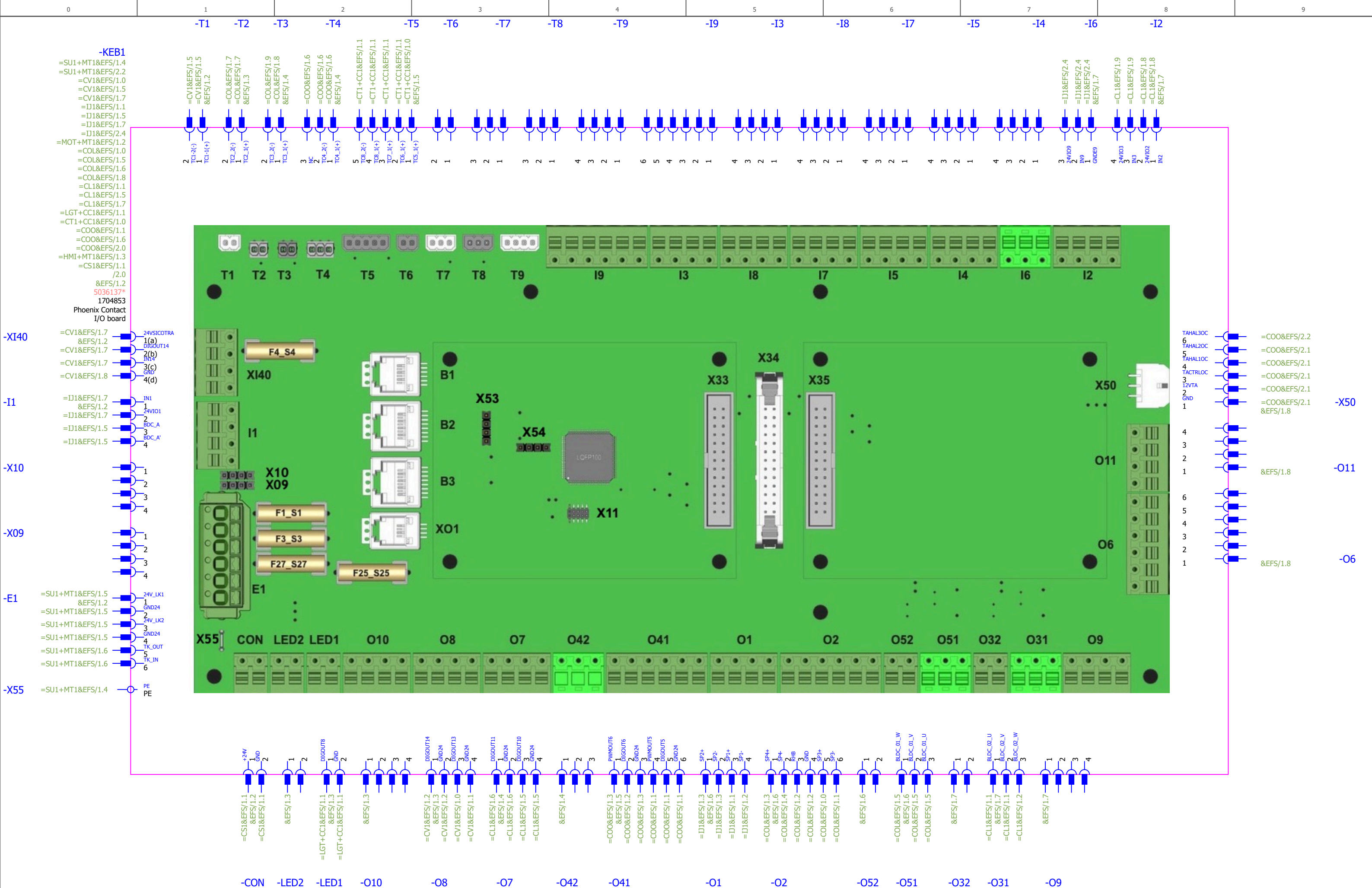
Wiring compartment
- +CC1

Oven cavity
- +DO1

Unit door



&EFA	Electrical engineering Functional overview documents
&EFS	Electrical engineering Circuit documents



* further articles see Bill of materials

			Date 28.05.2025	Observe protection notices in accordance with ISO 16016	= Control Overview Main board complete	articlenumber circuit diagram		Combi oven		= CS1	PLC
			Ed. ALTENDORF.A			5336500-10015_00		Control		= PLC	
			Appr STENZEL.K					Wiring compartment		+ WC1	
Modification	Date	Name	Original			Project description		Electrical engineering Functional overview documents		& EFA 1 =	

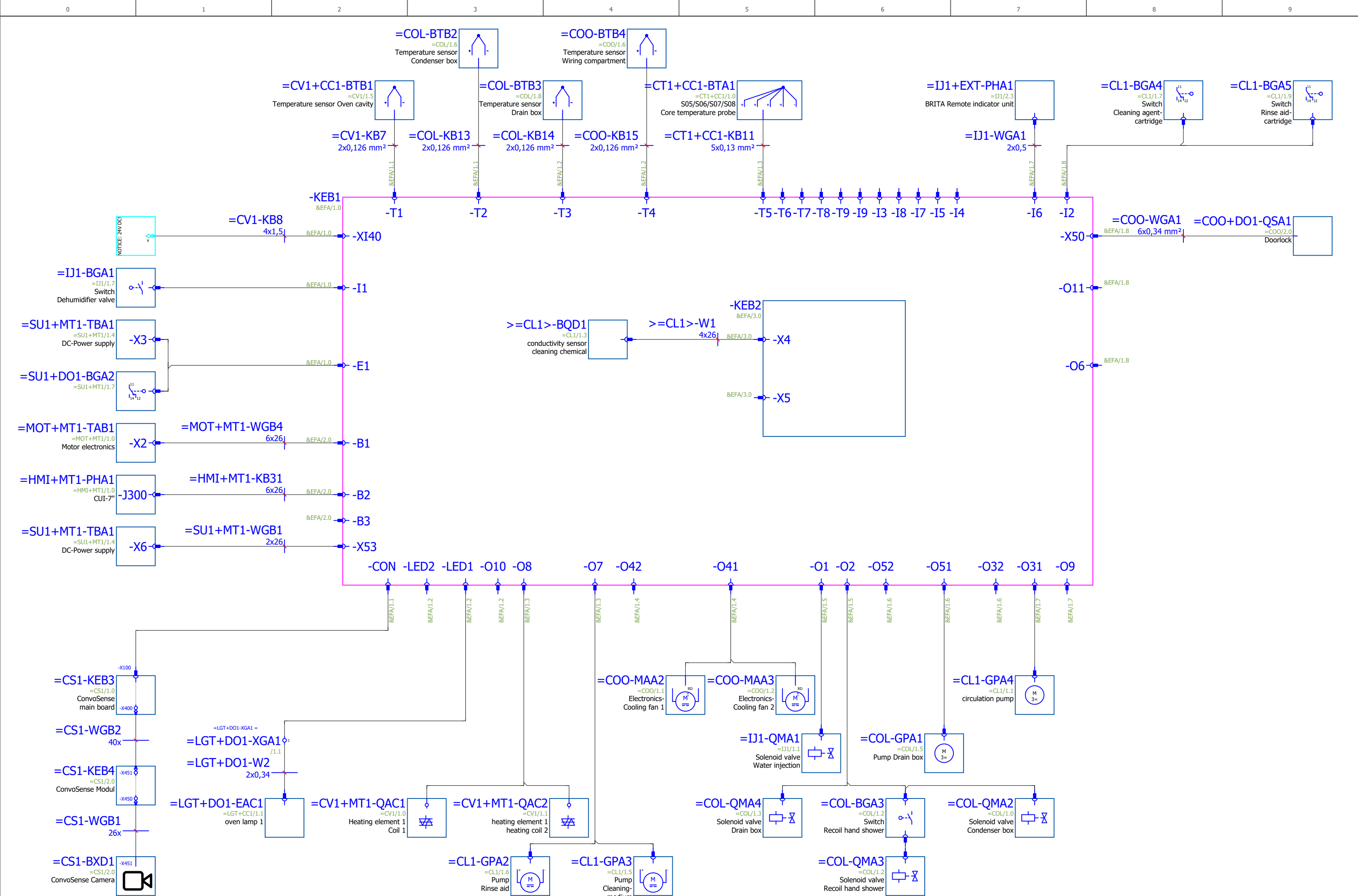


CTC

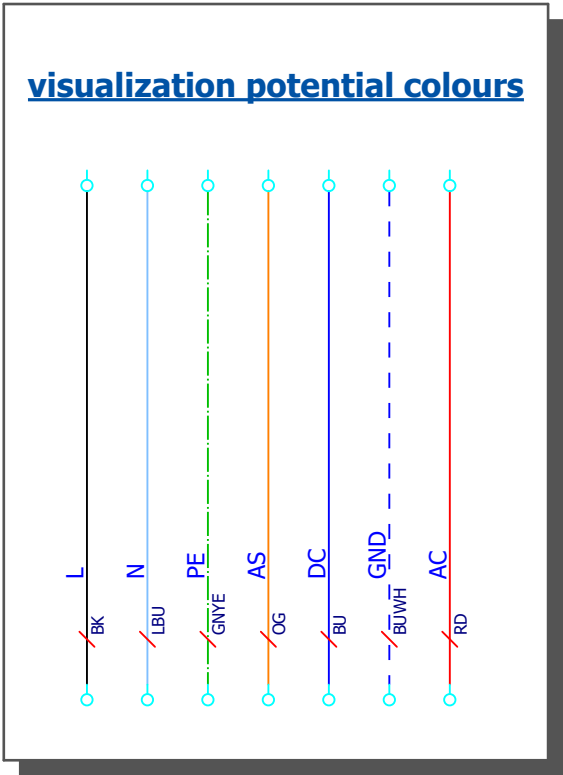


Control
Overview Expansion board

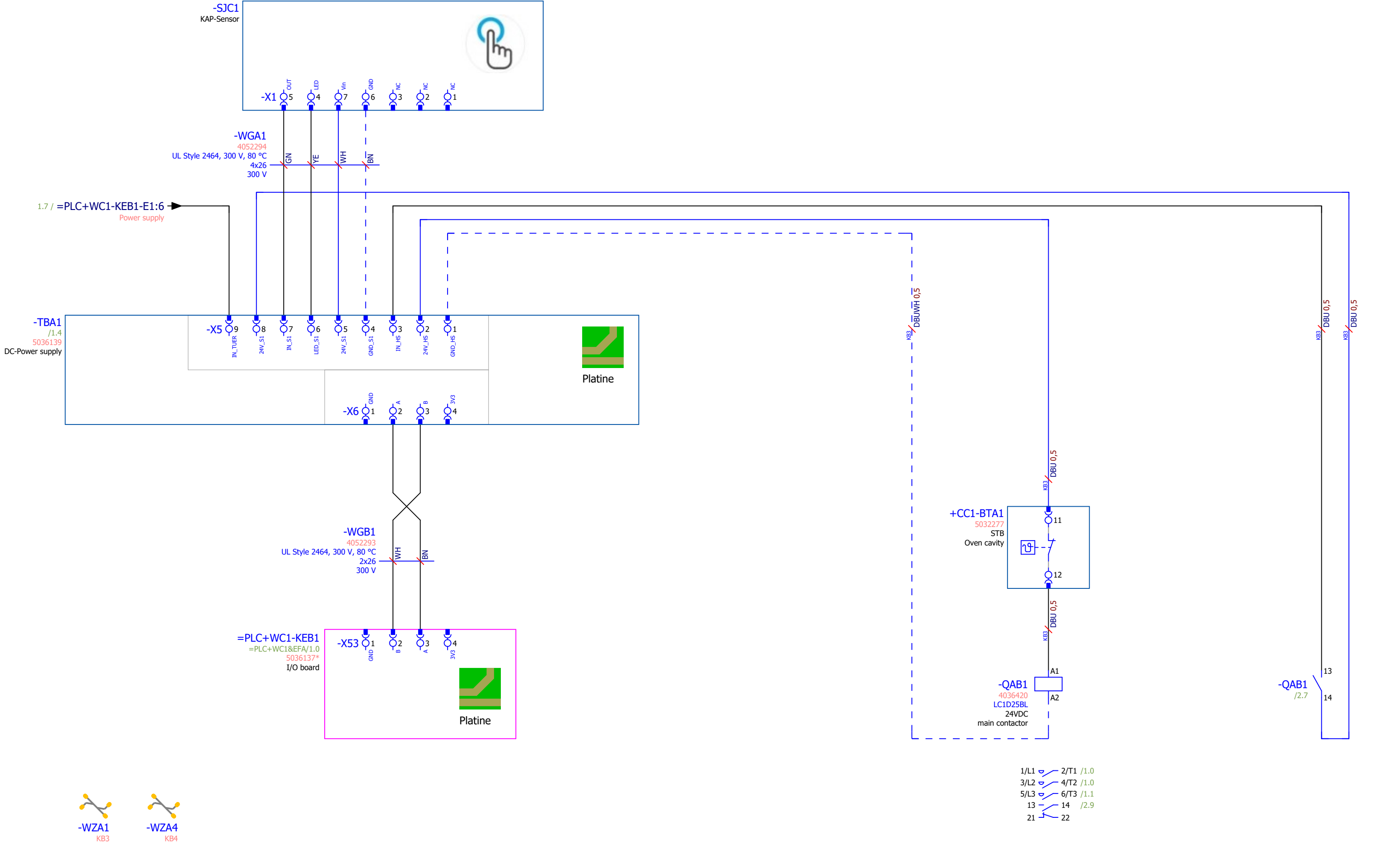
articlenumber circuit diagram 5336500-10015_00	Combi oven		==	CS1	PLC
	Control		=	PLC	
articlenumber device	Project description	Wiring compartment		+ WC1	
17.0	E	Electrical engineering Functional overview documents		& EFA 3 =	



			Date	28.05.2025	Observe protection notices in accordance with ISO 16016	= Control Wiring overview	articlenumber circuit diagram 5336500-10015_00		Combi oven		== CS1	PLC
			Ed.	ALTENDORF.A			articlenumber device		Control		= PLC	
			Appr	STENZEL.K			Project description		Wiring compartment		+ WC1	
Modification	Date	Name	Original				17.0		Electrical engineering Circuit documents		& EFS 1	

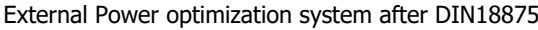


			Date	28.05.2025	Observe protection notices in accordance with ISO 16016	= Power supply Power supply	articlenumber circuit diagram 5336500-10015_00	Project description	Combi oven		==	CS1
			Ed.	ALTENDORF.A					Power supply		=	SU1
			Appr	STENZEL.K					Mounting panel		+	MT1
Modification	Date	Name	Original						17.0	E	Electrical engineering Circuit documents	&



* further articles see Bill of materials

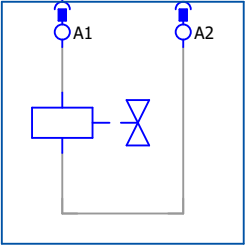
			Date28.05.2025	Observe protection notices in accordance with ISO 16016	= Power supply Power supply	articlenumber circuit diagram 5336500-10015_00	Project description 17.0	E	Combi oven	= CS1	SU1
			Ed. ALTENDORF.A						Power supply	= SU1	
			Appr STENZEL.K						Mounting panel	+ MT1	
Modification	Date	Name	Original						Electrical engineering Circuit documents	& EFS 2	



=PLC-KEB1
=PLC&EFA/1.0
5036137*
I/O board

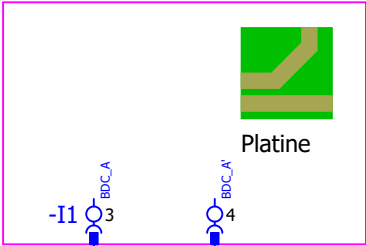


-QMA1
=PLC/1.5
A13
Solenoid valve
Water injection

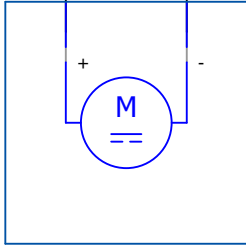


-WZA2
KB21

=PLC-KEB1
=PLC&EFA/1.0
5036137*
I/O board

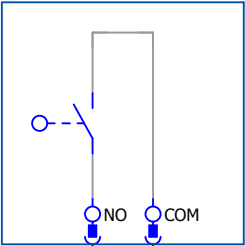


-MAA1
24V DC
A15
Dehumidifier valve

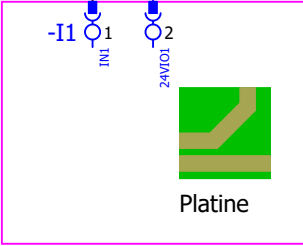


-WZA3
KB23

-BGA1
=PLC/1.0
S23
Switch
Dehumidifier valve

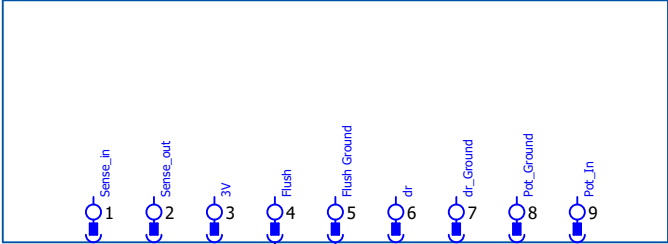


=PLC-KEB1
=PLC&EFA/1.0
5036137*
I/O board



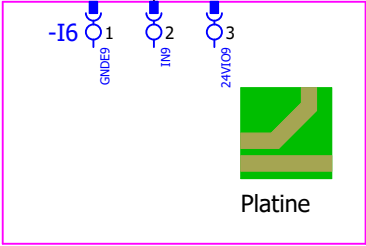
* further articles see Bill of materials

+EXT-PHA1
=PLC/1.7
BRITA Remote indicator unit

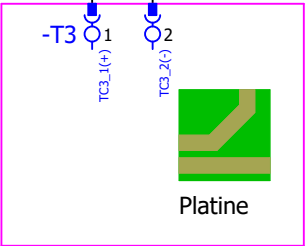
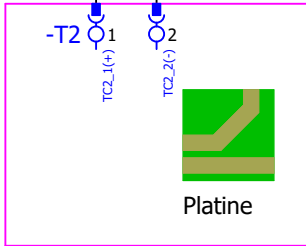
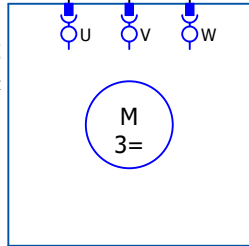
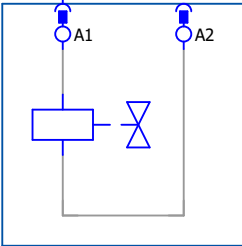
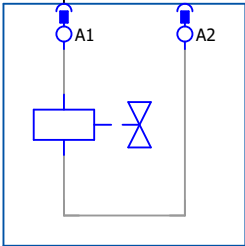
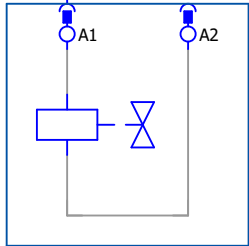
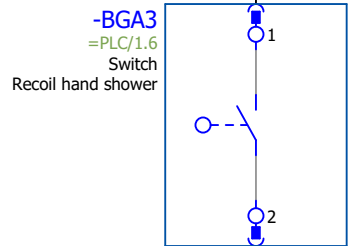
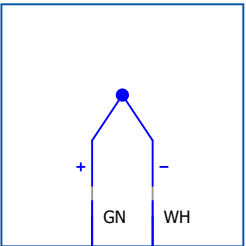
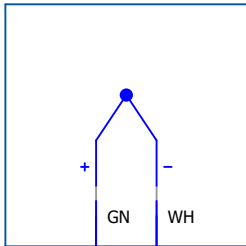
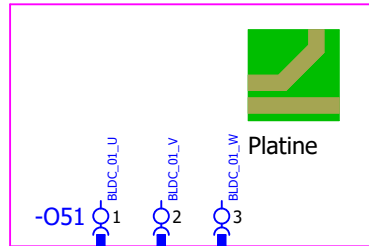
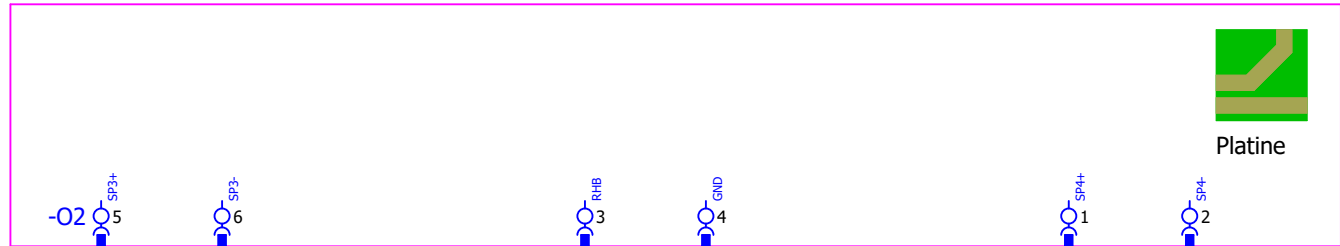


-WGA1
2x0,5

=PLC-KEB1
=PLC&EFA/1.0
5036137*
I/O board



* further articles see Bill of materials



Observe protection notices in accordance with ISO 16016

Condenser box
Condenser box

5336500-10015_00

Project description

17.0

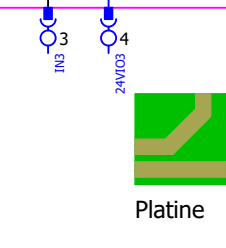
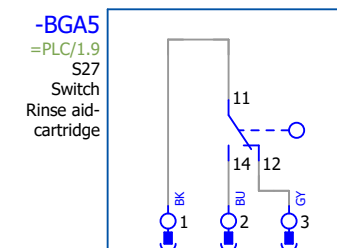
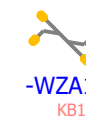
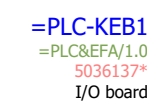
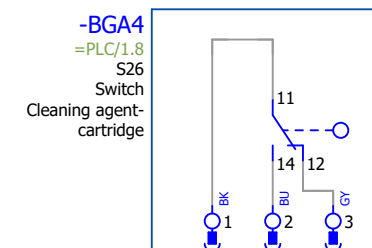
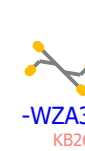
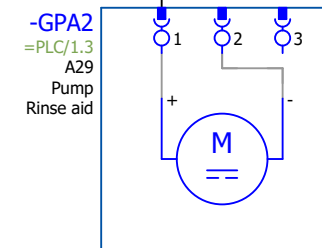
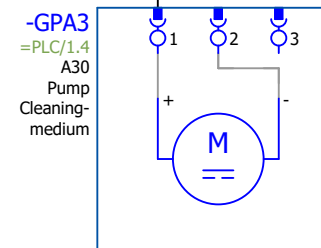
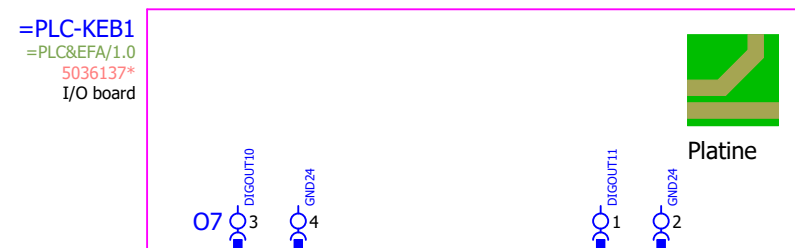
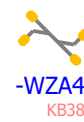
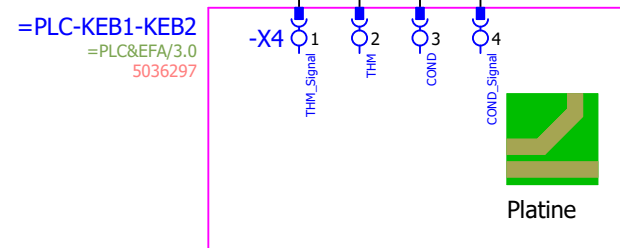
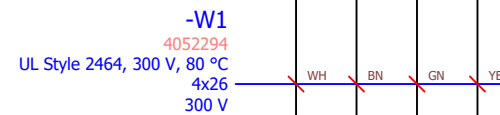
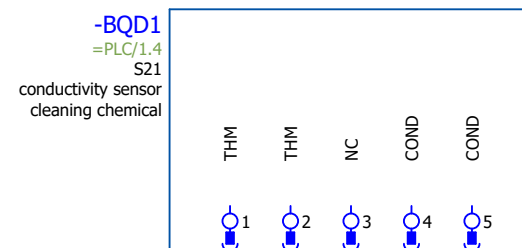
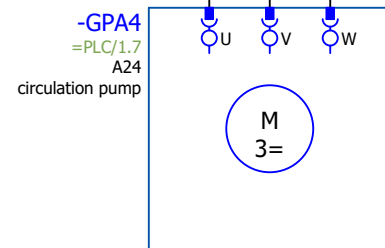
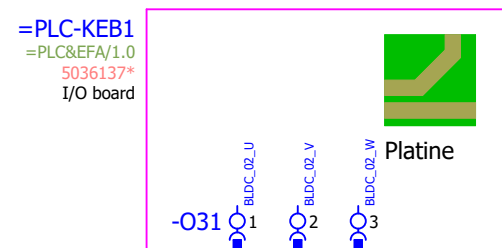
== CS1

= COL

+ WC1

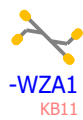
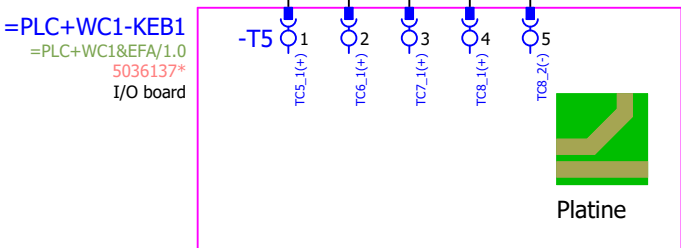
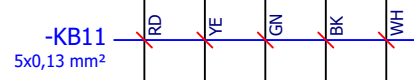
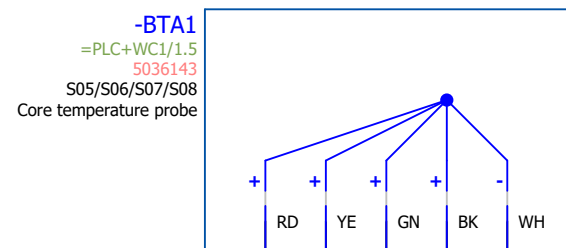
& EFS

COL



		Date	28.05.2025	Observe protection notices in accordance with ISO 16016	= Cleaning 1 (Solid to Liquid) Cleaning	artikelnr circuit diagram 5336500-10015_00	Combi oven		= CS1	CL1
		Ed.	ALTENDORF.A				Cleaning 1 (Solid to Liquid)		= CL1	
		Appr	STENZEL.K				Wiring compartment		+ WC1	
Modification	Date	Name	Original				Electrical engineering Circuit documents		& EFS 1 =	
						Project description				
						17.0	E			

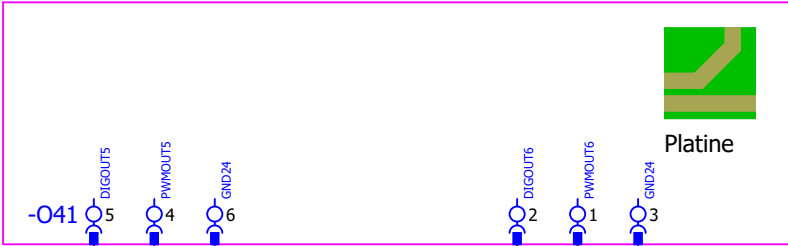
LGT



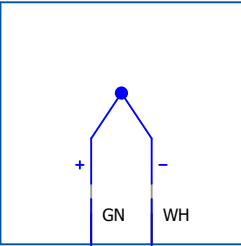
* further articles see Bill of materials

			Date	28.05.2025	Observe protection notices in accordance with ISO 16016	= Core temperature probe Sensor (Option)	artikelnr circuit diagram 5336500-10015_00	Combi oven		=	CS1	CT1		
			Ed.	ALTENDORF.A				Core temperature probe		=	CT1			
			Appr	STENZEL.K				Oven cavity		+	CC1			
Modification	Date	Name	Original					artikelnr device	Project description	E	Electrical engineering		Circuit documents	&
							17.0							

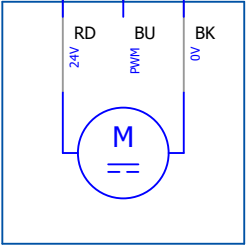
=PLC-KEB1
=PLC&EFA/1.0
5036137*
I/O board



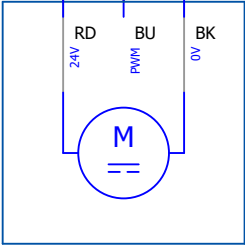
-BTB4
=PLC/1.4
5036134
S17
Temperature sensor
Wiring compartment



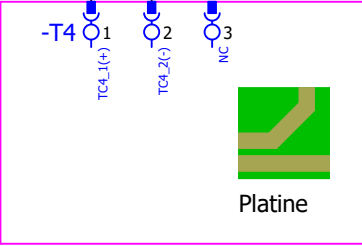
-MAA2
=PLC/1.4
24V DC
A21
Electronics-
Cooling fan 1



-MAA3
=PLC/1.5
24V DC
A22
Electronics-
Cooling fan 2



=PLC-KEB1
=PLC&EFA/1.0
5036137*
I/O board



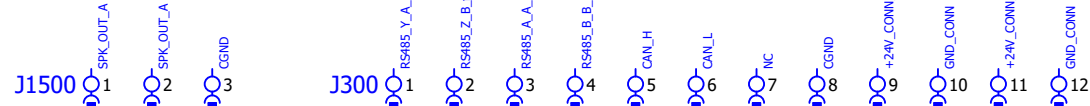
-WZA1
KB24

-WZA2
KB15

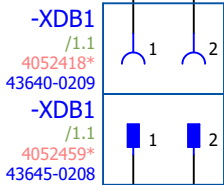
* further articles see Bill of materials

			Date	28.05.2025	Observe protection notices in accordance with ISO 16016	= Cooling Function	articlenumber circuit diagram	Combi oven	= CS1	COO
			Ed.	ALTENDORF.A			5336500-10015_00	Cooling	= COO	
			Appr	STENZEL.K			articlenumber device	Wiring compartment	+ WC1	
Modification	Date	Name	Original				Project description	Electrical engineering Circuit documents	& EFS 1	
							17.0	E		

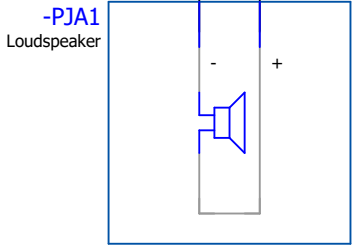
-PHA1
=PLC+WC1/1.0
/2.0
1805533
CUI-7"



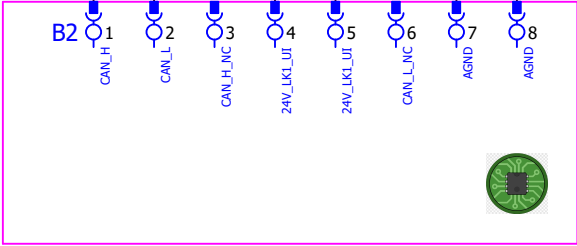
-KB35
5036689
UL Style 2464, 300 V, 80 °C
2x26
300 V



-KB31
5036686
UL Style 2464, 300 V, 80 °C
6x26
300 V



=PLC+WC1-KEB1
=PLC+WC1&EFA/1.0
5036137*
I/O board

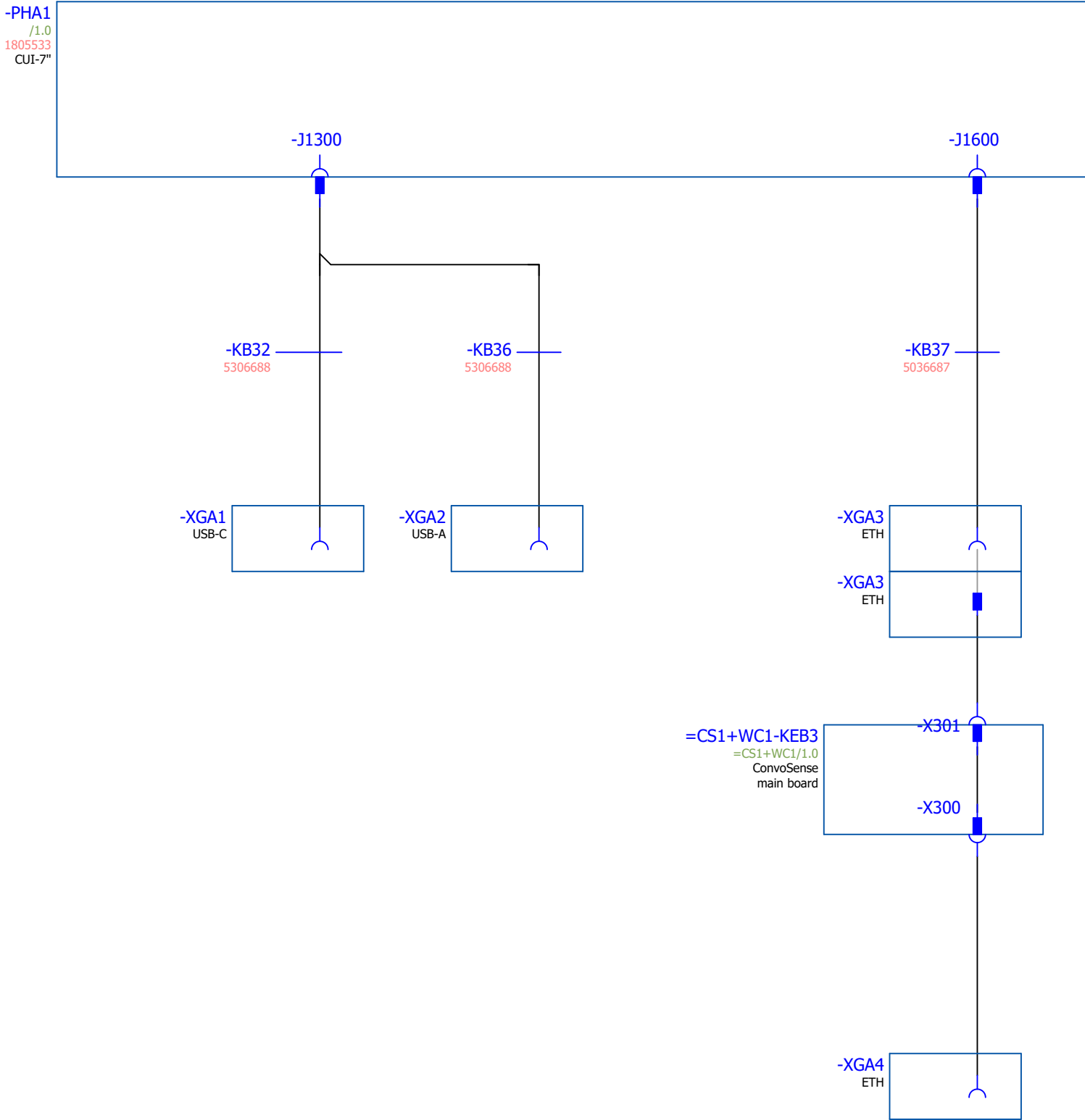


PE
=SUI/1.4 / =PLC+WC1-KEB1-X55:PE
Power supply



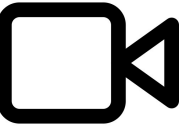
* further articles see Bill of materials

			Date	28.05.2025	Observe protection notices in accordance with ISO 16016	= HMI Control panel	articlenumber circuit diagram	Combi oven	= CS1	HMI
			Ed.	ALTENDORF,A			5336500-10015_00	HMI	= HMI	
			Appr	STENZEL,K			articlenumber device	Mounting panel	+ MT1	
Modification	Date	Name	Original				Project description		& EFS	1
							17.0	Electrical engineering Circuit documents		



* further articles see Bill of materials

			Date28.05.2025	Observe protection notices in accordance with ISO 16016	= HMI Control panel	articlenumber circuit diagram	Combi oven	= = CS1	HMI
			Ed. ALTENDORF.A			5336500-10015_00	HMI	= HMI	
			Appr STENZEL.K			articlenumber device	Mounting panel	+ MT1	
Modification	Date	Name	Original			Project description17.0 E	Electrical engineering Circuit documents	& EFS 2	



CS1

ConvoSense

Project description

17.0

Electrical engineering Circuit documents	
--	--

= CS1

+ WC1

2

			Date	28.05.2025	Observe protection notices in accordance with ISO 16016	= ConvoSense ConvoSense	articalnumber circuit diagram 5336500-10015_00	Project description	Combi oven		=	CS1	CS1
			Ed.	ALTENDORF.A					ConvoSense		=	CS1	
			Appr	STENZEL.K					Wiring compartment		+	WC1	
Modification	Date	Name	Original						Electrical engineering Circuit documents	&	EFS	2	